



AUTUMN TWO NEWSLETTER

SHIELD ROW PRIMARY SCHOOL

Our first half term was a busy one! Here's a round up of some of the key events.

OUTDOOR CLASSROOM DAY



On the 7th November, we all enjoyed outdoor classroom day! A day designed to encourage children to spend more time outside.

The children took part in a whole host of different activities including: scavenger hunts, cross curricular orienteering, story telling, team building challenges, maths problem solving, gardening, creating sculptures, making their own art work using chalks, toasting marshmallows round the fire pit and more! Our Nursery children loved making pancakes in the nursery garden.

It was a fun, action-packed day which the children thoroughly enjoyed.



IMPORTANT DATES



Monday 6th January: School Re-opens

Thursday 9th January: Y6 SATs meeting

Tuesday 14th January: SEN Meetings

Friday 17th January: SEN Meetings

Friday 7th February: NSPCC Number Day

Tuesday 11th February: Internet Safety Day

LEARNING TOGETHER SESSIONS

Wed 12th February: Y1 & Y2

Thursday 13th February: Y5 & Y6

Friday 14th February: Y3 & Y4

(changed from original planner date)

Friday 21st February: Last day of half term

FEBRUARY HALF TERM WEEK

Monday 3rd March: School Re-opens

LEARNING TOGETHER SESSIONS

Friday 7th March: Reception

PARENTS EVENINGS

1st and 3rd April - Nursery

7th and 9th April - Reception to Y6

LEARNING TOGETHER



Our autumn term Learning Together sessions were very well attended - thank you so much for your support.

Our Nursery and Reception sessions allowed a clear insight into what and how the children learn in the EYFS. Our Key Stage 1 and Key Stage 2 sessions focused on the mental maths skills that the children need to secure, to ensure success in maths. Staff shared with parents/ carers strategies and activities which can easily be replicated at home and we hope you found this very useful.

REMINDER: Download the **FREE** One Minute Maths app as a great game to help children strengthen their maths skills at home!

OUTDOOR PLAY & LEARNING



You may have noticed that our new welly sheds have arrived! If your child doesn't already have a pair of wellies in school, we will be asking them to bring some in after the Christmas break. It is important that all children have access to a pair of wellies to enable them to use the grounds during the school day.

We will be working with OASES in the new year to carry out some tree planting on the school field which we hope will help with drainage during the wetter months, but will also - in time - create new play spaces for the children. We have a whole day of planting scheduled for Tuesday 11th March and we will be asking for parents/ carers to come along and help us, so try and keep this date free if you can! We would really appreciate your support with this.



Outdoor
And
Sustainability
Education
Specialists



BEAMISH TRIP



Three of our classes had a fantastic day at Beamish as part of their history units.

Year 1 have been learning about school days past and present and experienced first hand how different life in a Victorian classroom was!

Year 5 studied the West Stanley Pit disaster. The children were able to find out more about the life of a miner and their family and explore the conditions and dangers of working down the mine.

Year 6 have been studying WW1 and WW2 and found out more about the black out, rationing and the Home Guard.



SPORT



After Christmas, Miss Robson will be looking to put together a girls football team. We are hoping to enter a team into the upcoming girls 7 a side league, which starts at the end of January.

NO OUTSIDERS



This term we had a visit from Andrew Moffat, the CEO of the No Outsiders charity. Andrew is an experienced teacher, currently working in Birmingham. He spent the day in school delivering a lesson to each class based on a different story. The No Outsiders programme is designed to promote community cohesion and prepare young people for life as global citizens. The sessions explored the theme of: we are all different; we are all welcome.

Using the No Outsiders programme in school, is part of our ongoing commitment to creating an inclusive, respectful and supportive environment for all of our pupils. We will be sharing more information with you in the new year.



Y2 SAMBA DRUMMING

Year 2 have been having weekly music sessions with Mr Abbott since September and have been learning all about tempo, volume, rhythm and crescendo. The children played some fantastic music for their adults and impressed us all with their music skills!



CHRISTMAS



The children were entertained by some wonderful shows from Bigfoot Arts North East. EYFS and Y1 had lots of giggles at The Greediest Elf and Y2-Y6 enjoyed the very clumsy Dib and Dab. School received a £150 donation from Derwentside Athletics Club, which we used towards the shows for the children.

Thank you to everyone who was able to make it into school to watch our Christmas assemblies. Each class performed exceptionally well and helped to bring the joy of the season into Shield Row. I am sure you are as proud as we are of the children. They are absolute stars!

Now we are in the final week of term, Christmas parties are in full swing and the children are having a great time celebrating with their friends.



ATTENDANCE



Can we remind parents/ carers that if your child is going to be absent from school you should contact the school office before 9:30am. Voice messages can be left at anytime on our attendance answer machine. Failure to provide a reason for absence results in an 'unauthorised' absence on your child's record. Unauthorised absences can lead to a referral to the Local Authority.

CURRENT ATTENDANCE:

Reception = 95.4%
Year 1 = 92.7%
Year 2 = 94.6%
Year 3 = 96%
Year 4 = 94.7%
Year 5 = 95.7%
Year 6 = 94%

Whole School = 94.7% Current National Avg = 95.3%

SCHOOL UNIFORM



We have seen an increase in the number of children not coming to school in the correct uniform. Our uniform policy is a red school jumper, white polo shirt, grey or black skirt/ dress/ trousers/ shorts and black school shoes.

If your child is wearing trainers, they should be all black.

Please ensure your child is in the correct uniform. If you are having financial difficulties, please get in touch and we can help you to access support.

Thank you for your support in this matter.

NURSERY CHALLENGES



Mrs Brown has been setting our Nursery children a weekly challenge to do at home. The children have been focusing on putting on their shoes and socks independently, brushing their teeth, playing a game to take turns, helping to make their beds... and more! We have loved seeing the children achieve their challenges through Seesaw - well done boys and girls!

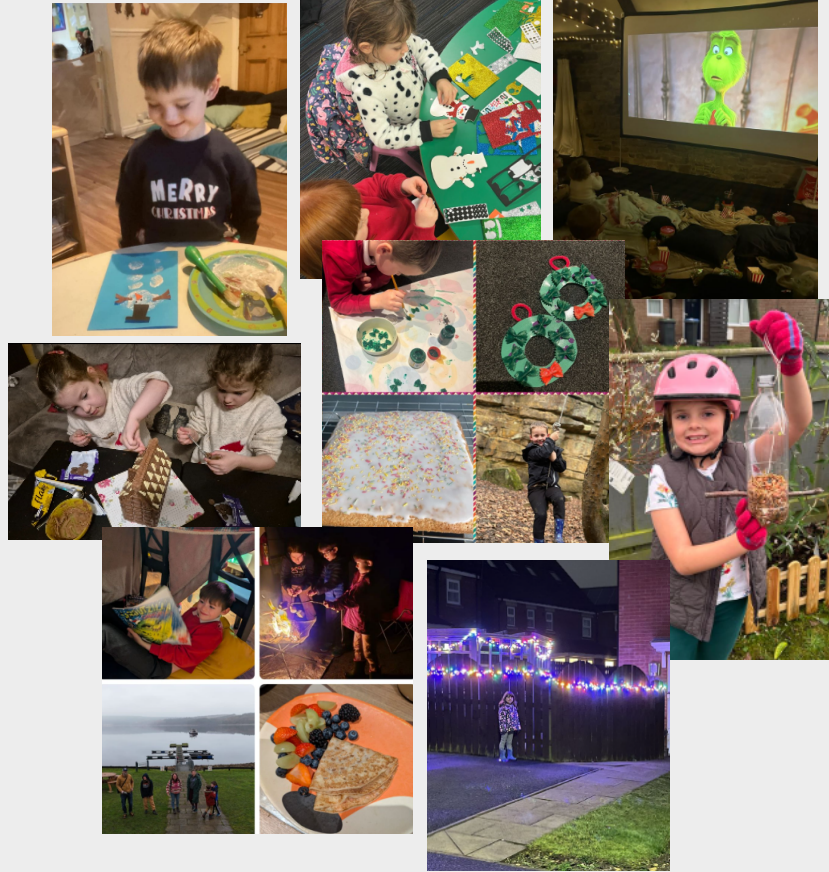


FAMILY BINGO

A huge well done to everyone who has taken part in our Family Bingo challenge this half term. We have absolutely LOVED seeing you complete the activities and having so much fun in the process!

All bingo sheets have been collected and the winner will be drawn on the last day of term. There is a super hamper up for grabs!

After Christmas, we will be launching our next wellbeing theme which is all about oral hygiene. We are hoping to get the children geared up for another home challenge!



LEAVE OF ABSENCE



If you do need your child to miss school for any particular reason, please ensure you complete a 'leave of absence' form, which are available from the office or can be downloaded from our school website.

WRAP AROUND CARE

You should have seen the letter that was sent out regarding changes to our wrap around care offer. As a reminder, from January, all places in breakfast club and Recharge will need to be pre-booked and pre-paid via Arbor. Sessions must be booked at least 24 hours in advance.

If you currently do not have access to Arbor, it is essential that you get in touch with the school office and provide your email address so we can help you get set up. School's main communication comes via Arbor, so it is important that you have an account.

FRIENDS OF THE SCHOOL

Historically, we have had a very active 'Friends of the School' who have helped to arrange and run events in school to fund raise for the children. As children have moved on to secondary school, our 'Friends' group is no longer operational.

To see if we can re-launch the Friends, Miss Shield will be inviting any parents/ carers who are interested in getting involved, into school for a meeting in the new year.

If this is something you feel you would like to help with, please look out for the invite.

